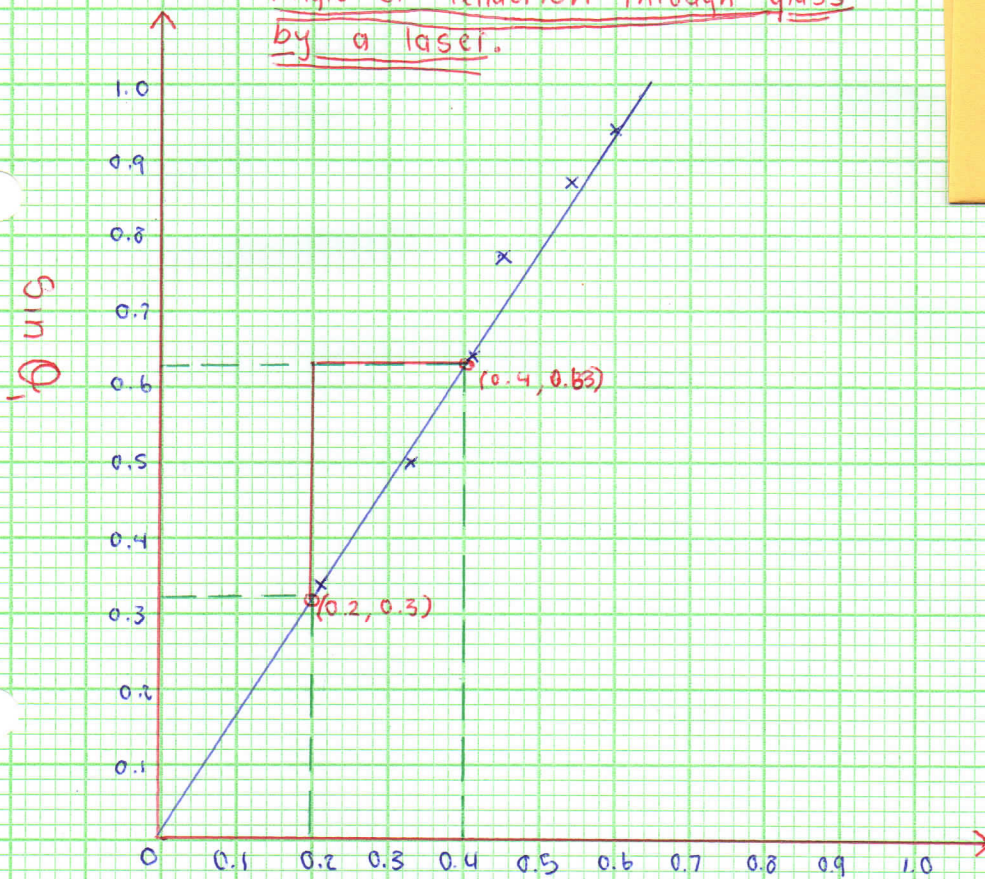


## Angle of refraction through glass by a laser.



$\sin \theta_2$

$$\text{Gradient} = \frac{\Delta y}{\Delta x} = \frac{0.63 - 0.3}{0.4 - 0.2} = \frac{0.33}{0.2}$$

$$\text{Gradient of graph} = \frac{0.33}{0.2}$$

$$\text{equation of graph} = y = \frac{0.33}{0.2} x$$

Question 2

## Questions

1. The relationship  $\sin \theta_1$  is proportionate to  $\sin \theta_2$
3. My Refractive Index is 1.65 as shown by the calculations above in Question 2
4. I believe that my values for  $n$  are relatively accurate because My Experimental value for the refractive index of glass is relatively similar (1.65 in comparison with 1.52)